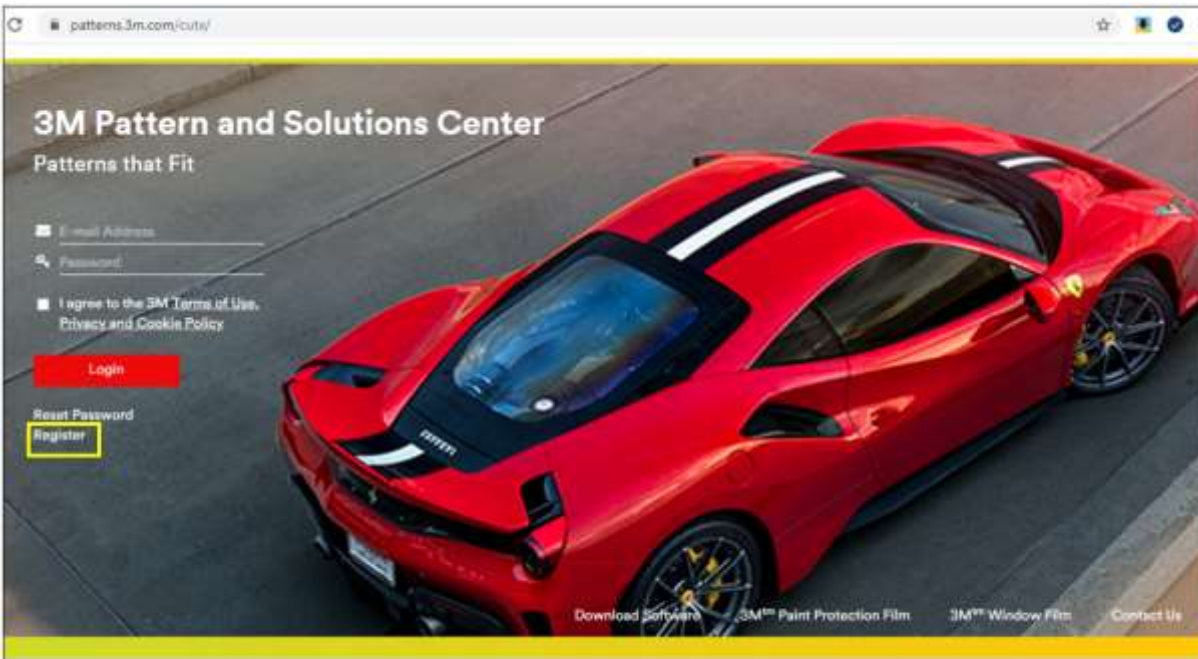


3M™ Pattern and Solutions Center Installation Guide

NOTE: To use the 3M™ Pattern and Solutions Center Software, you must be a registered user.

At www.patterns.3m.com, click the Register link.

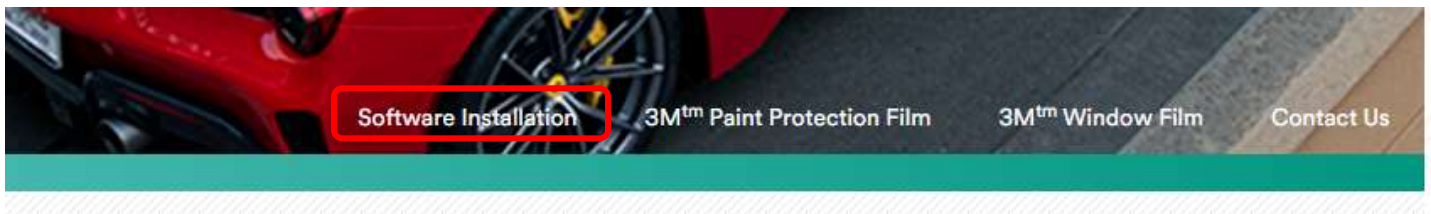


Fill in the registration form completely.

An e-mail will be sent to the address provided in the registration form once access to 3M™ Pattern and Solutions Center is approved.

Installing 3M™ Pattern and Solutions Center Software

After user approval is confirmed, go to the Software Installation page found at www.patterns.3M.com.



Click Download Software to begin installation

Software Installation

Thank you for choosing 3M™ Pattern and Solutions Center as your automotive film pattern software.

Install

[Download Software](#)

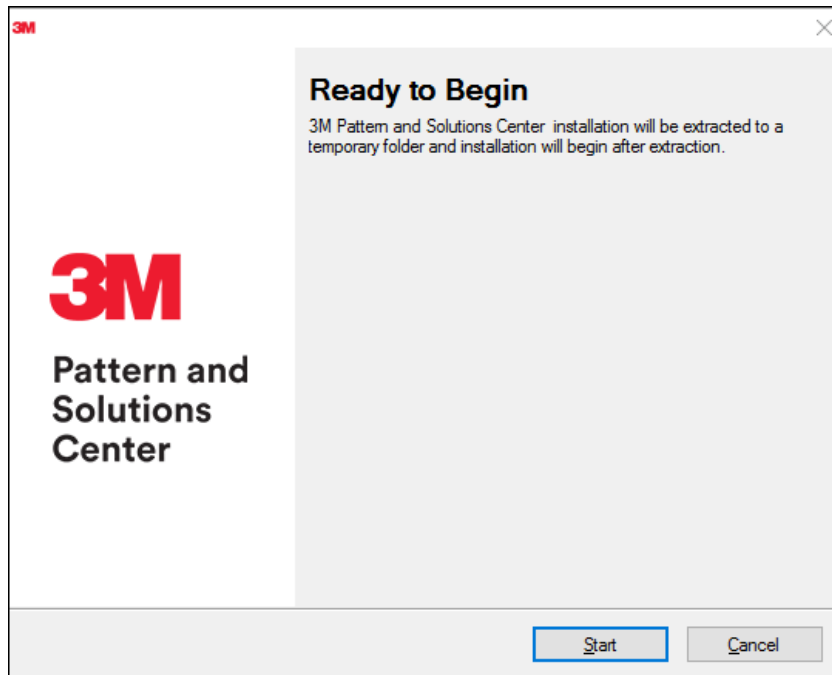
Are you installing the 3M™ Pattern and Solutions Center software for the first time? Click the 'Download' button below to save the installation wizard to your computer and then follow along with the video tutorial or the step-by-step guide to finish installing the demo software. Note that the 3M™ Pattern and Solutions Center software only works on Windows computers.

[3M PSC Installation Guide \(pdf\)](#)

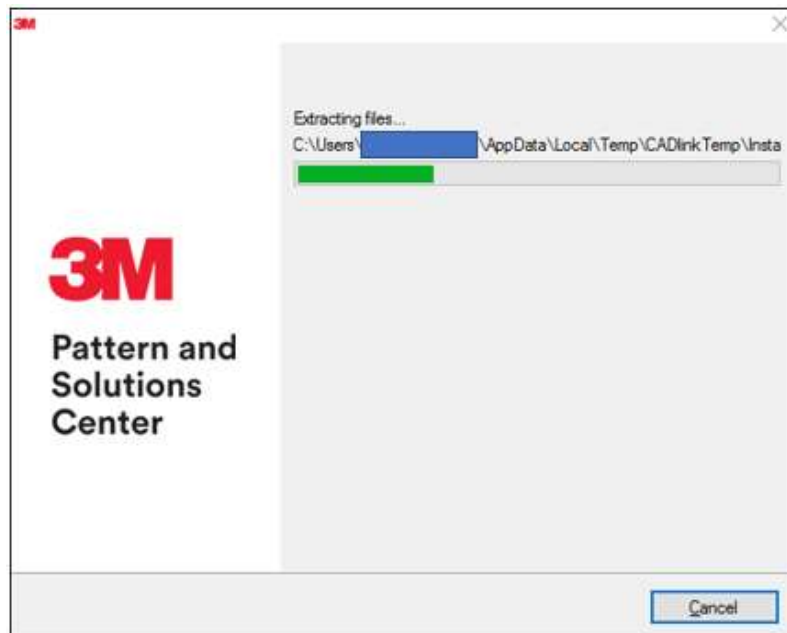
If you are prompted to choose “SAVE” or “RUN,” choose “SAVE” and choose a destination on your computer where you can easily locate the file after the download is complete.

Once your download finishes find the executable file (3MPatternAndSolutionsCenter.exe). Double click to run this file and begin the installation. Follow the on-screen prompts and refer to this guide if you need additional assistance.

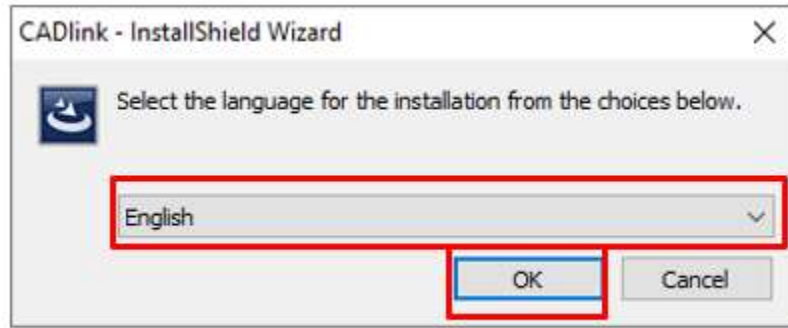
Once the installation wizard starts, click Start button



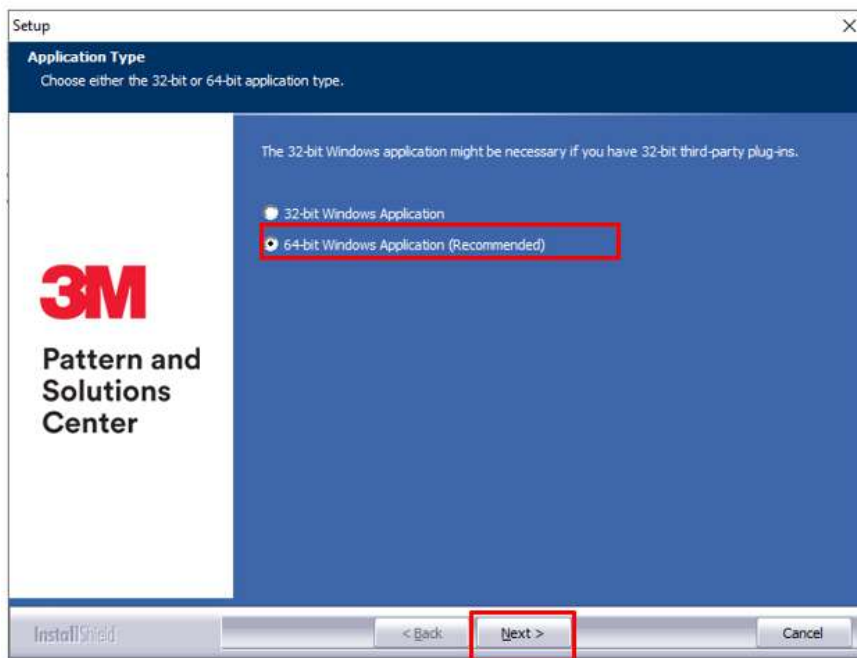
File extraction will begin



Select a language from the drop down and click OK



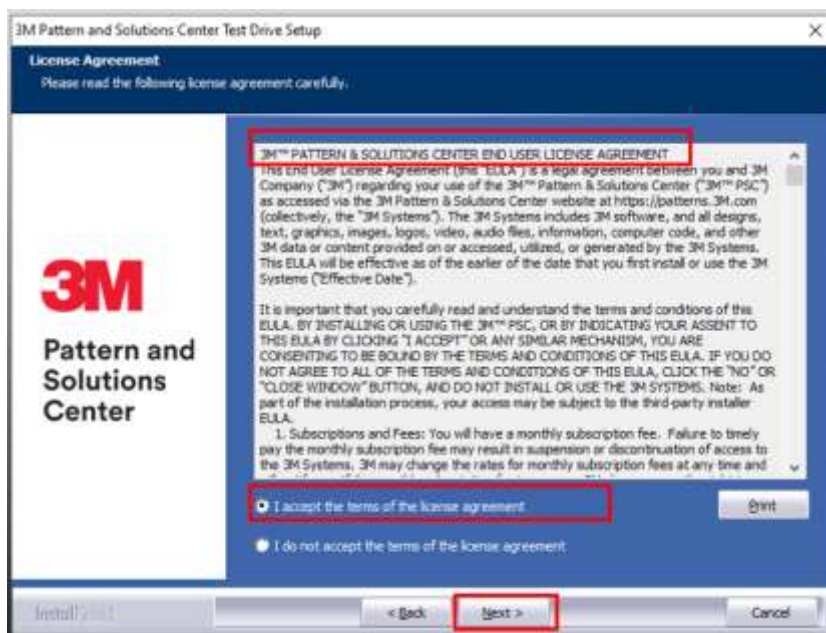
Select Application Type 32 OR 64 bit and click Next (64 bit is most common)



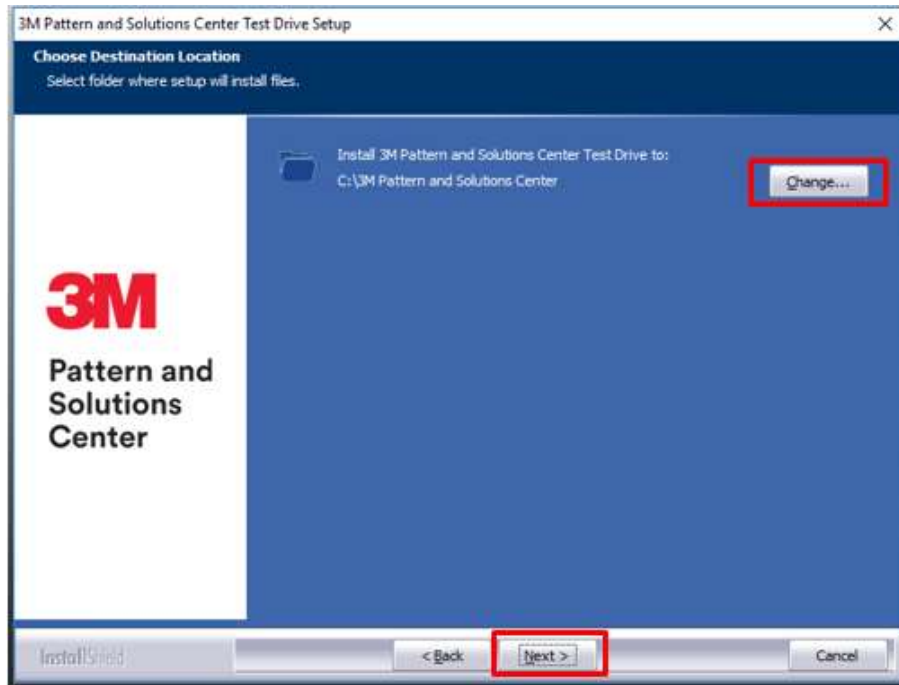
Click on Next in setup wizard



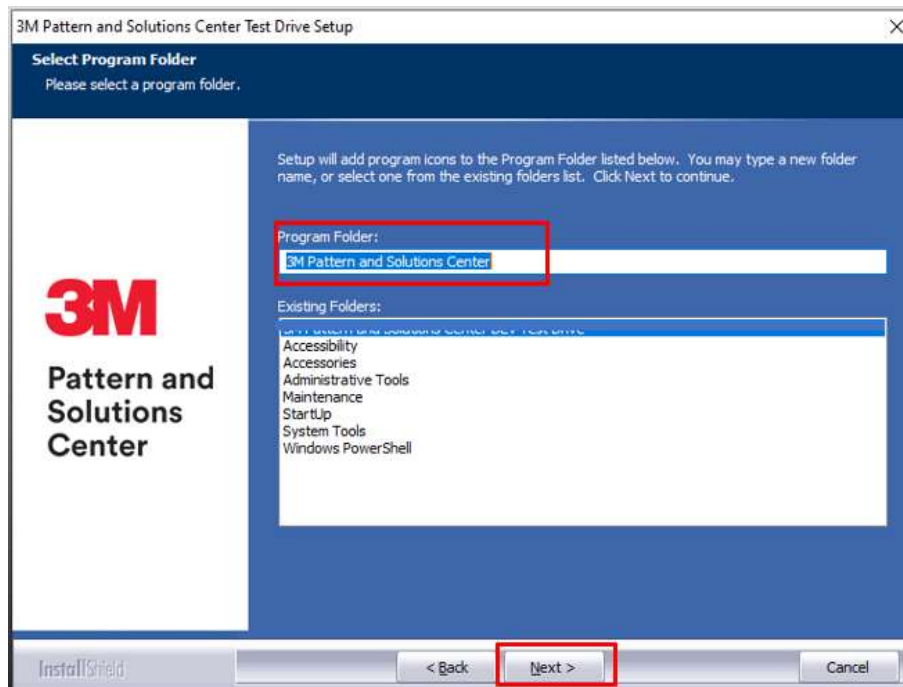
Please read the following license agreement carefully. If you accept, click the button 'I accept the terms...' and select Next. You may print the license agreement if you wish before selecting Next.



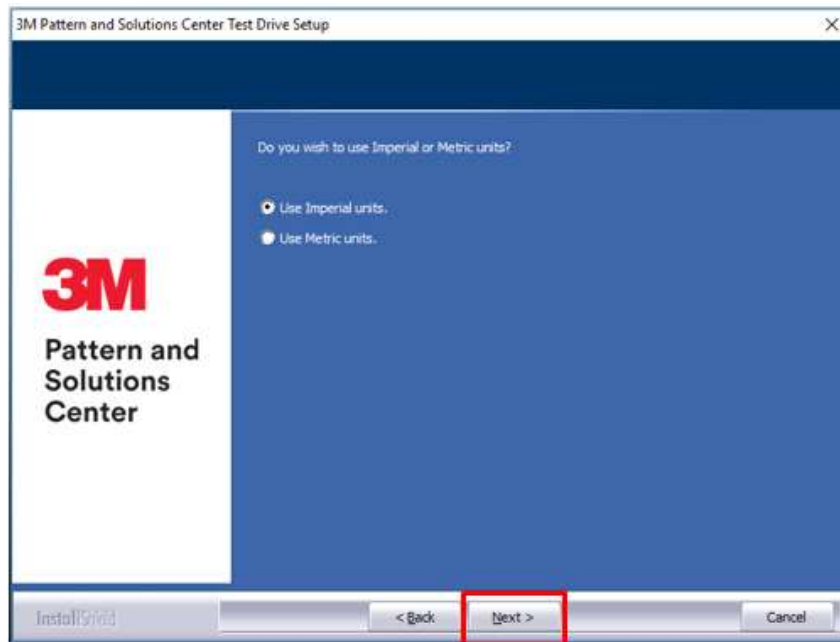
You may change the default installation folder; however, this is NOT recommended by 3M™. Select Next



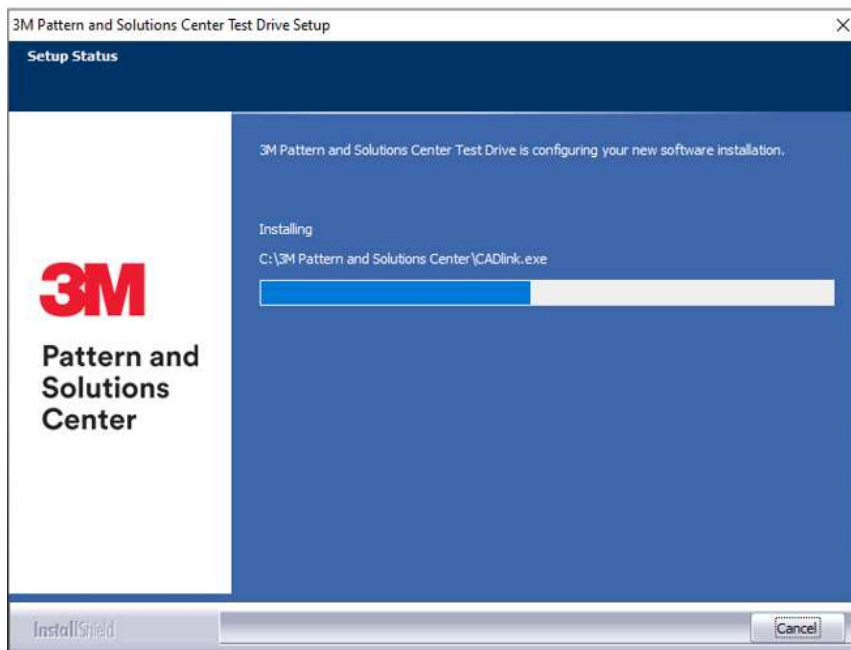
The Program Folder name also can be changed, but this is NOT recommended. Click Next.



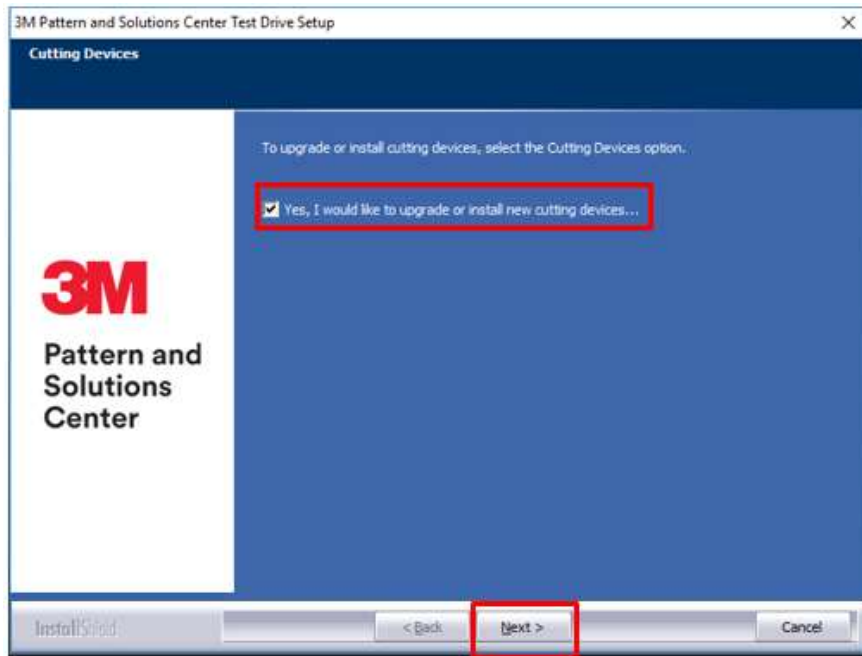
Choose your default Unit of measure (Imperial for inches, Metric for centimetres) then click on Next
On the next screen click Next again.



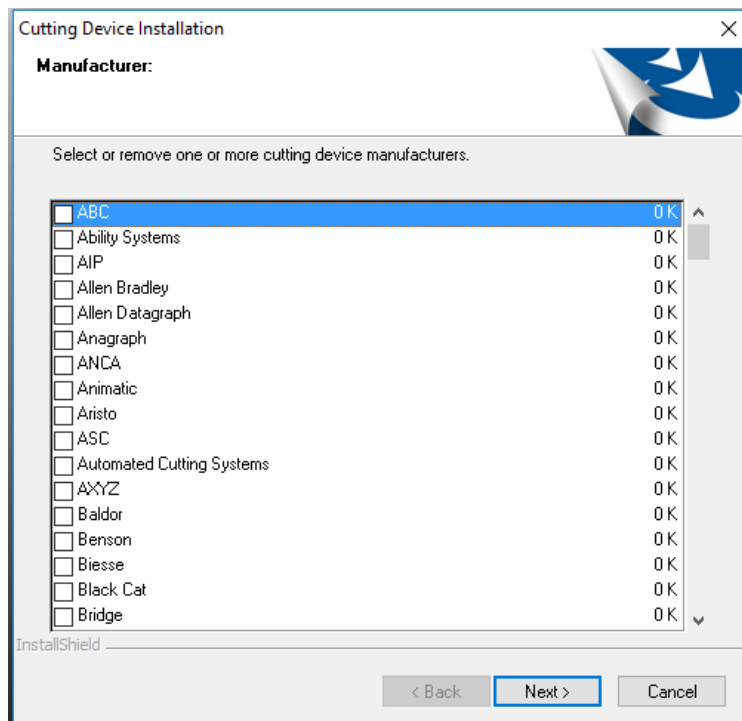
Installation will start, wait until complete



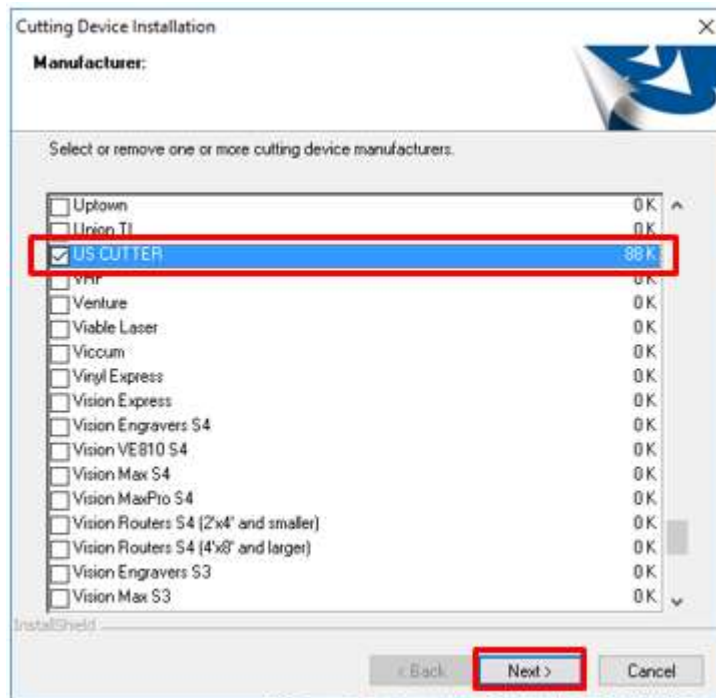
Check Yes, I would like to upgrade or install cutting devices. This will allow you to install your Make and Model for your plotter/cutting device
Click Next to continue.



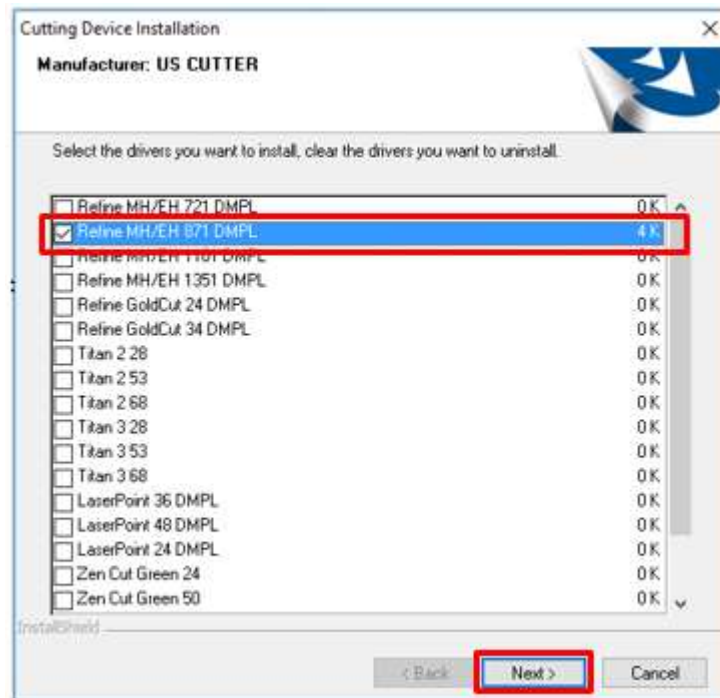
Plotter driver setup will start, and all available devices will be listed.



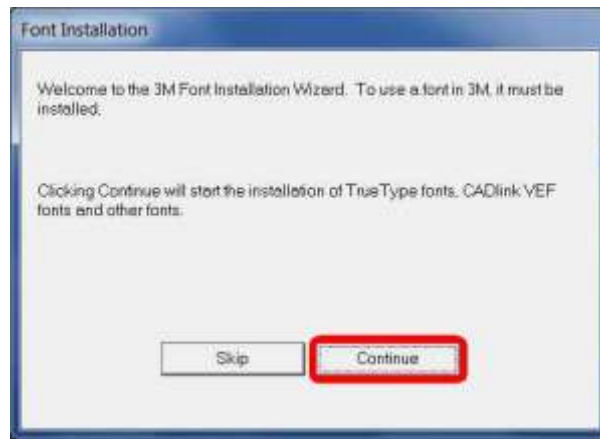
In the wizard, select the Manufacturer and click Next



Select Driver/Output Device that match your plotter, then click Next: This will install the driver for the selected plotter.

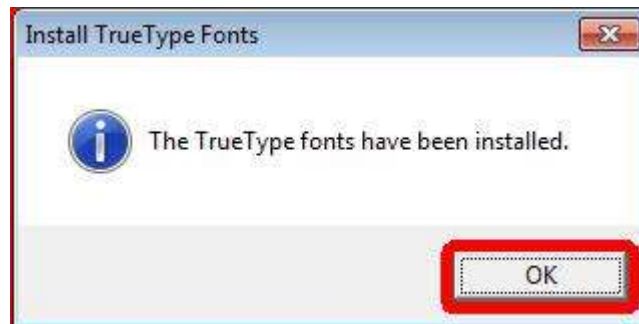


3M™ Recommends selecting Continue to automatically install fonts from your computer. Skipping this step may cause errors during pattern downloads.



An Additional Font Installation pop up will open after installing the 3M™ Fonts. If you want to install more fonts click Yes, if not click No. The most common selection is No.

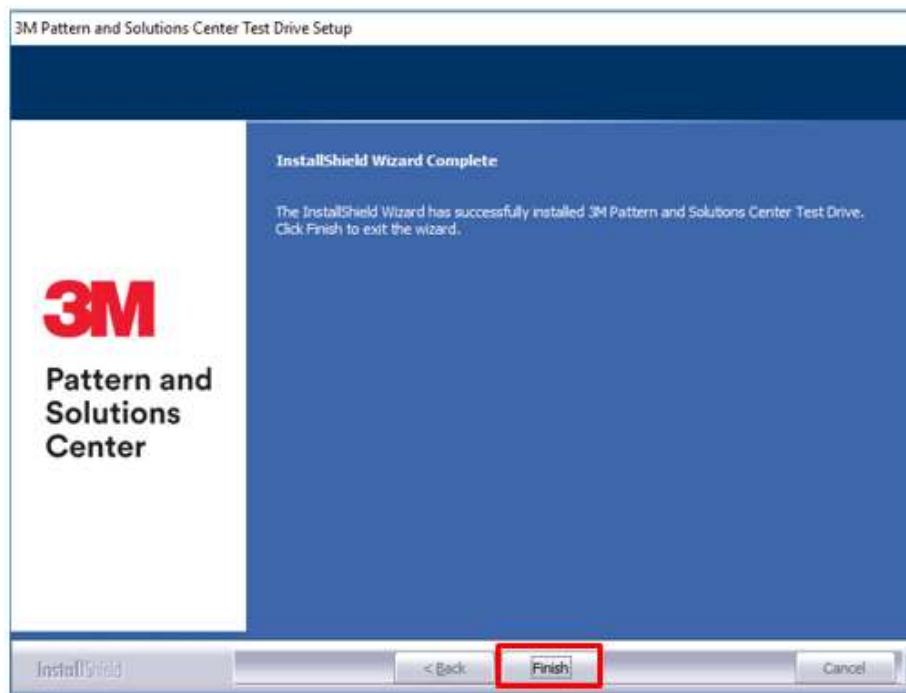
Click OK to continue



On the next pop-up click OK again. It may take several minutes while it searches your computer for additional fonts. If the process freezes or you do not care about additional fonts from your computer, press the ESC key on your keyboard.

Click Finish to exit the installation wizard

It is recommended that you restart your computer after installing new software



To open 3M™ Pattern and Solutions Center, Click on the '3M Patterns' desktop shortcut. The application will launch your preferred web browser.



